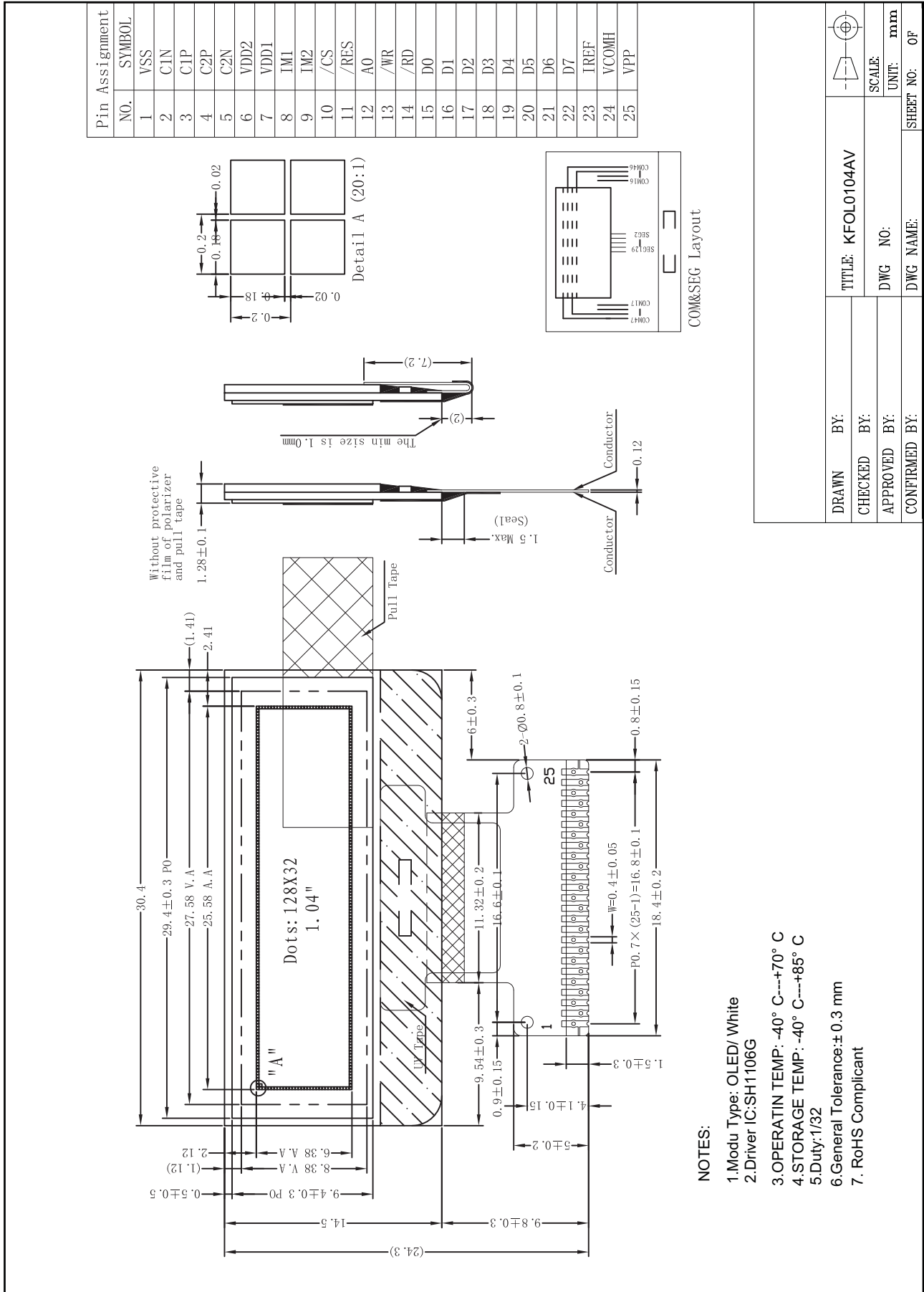


Outline Drawing



NOTES:

- 1.Modu Type: OLED/ White
- 2.Driver IC:SH1106G
- 3.OPERATIN TEMP: -40° C---+70° C
- 4.STORAGE TEMP: -40° C---+85° C
- 5.Duty:1/32
- 6.General Tolerance:± 0.3 mm
7. RoHS Compliant

DRAWN BY:	BY:	TITLE: KFOL0104AV	
CHECKED BY:	BY:	DWG NO:	
APPROVED BY:	BY:	DWG NAME:	UNIT: mm
CONFIRMED BY:	BY:		SHEET NO: OF