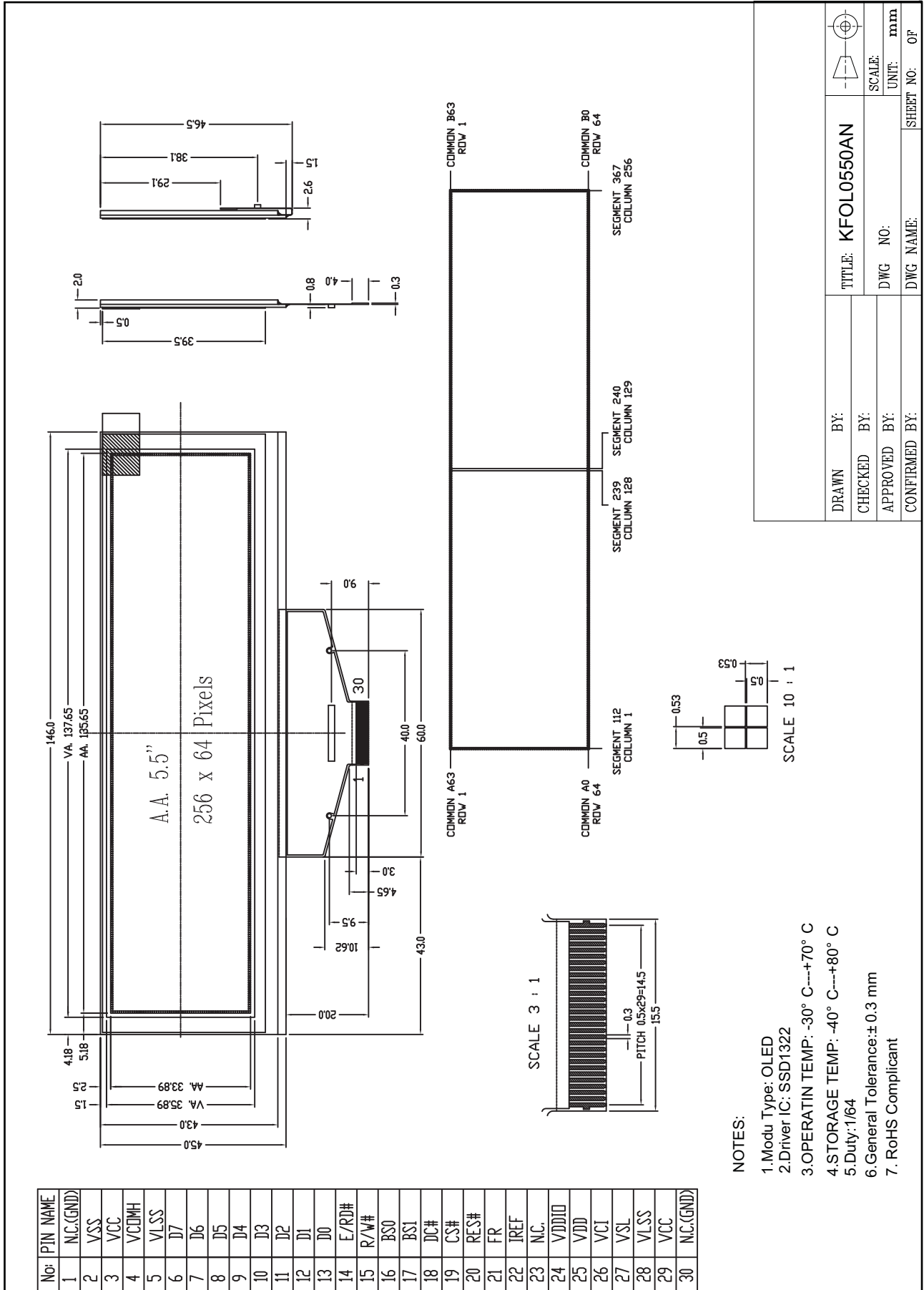


Outline Drawing



No:	PIN NAME
1	N.C.(GND)
2	VSS
3	VCC
4	VCOMH
5	VSS
6	D7
7	D6
8	D5
9	D4
10	D3
11	D2
12	D1
13	D0
14	E/RD#
15	R/W#
16	BS0
17	BS1
18	DC#
19	CS#
20	RES#
21	FR
22	IREF
23	N.C.
24	VDDIO
25	VDD
26	VCI
27	VSL
28	VSS
29	VCC
30	N.C.(GND)

NOTES:

- 1.Modu Type: OLED
- 2.Driver IC: SSD1322
- 3.OPERATIN TEMP: -30° C---+70° C
- 4.STORAGE TEMP: -40° C---+80° C
- 5.Duty:1/64
- 6.General Tolerance:± 0.3 mm
7. RoHS Compliant

DRAWN BY:	TITLE: KFOL0550AN	SCALE:	UNIT: mm
CHECKED BY:	DWG NO:	SCALE:	UNIT: mm
APPROVED BY:	DWG NAME:	SCALE:	UNIT: mm
CONFIRMED BY:	SHEET NO: OF	SCALE:	UNIT: mm